

SEPARABLE COUNTER NUT SPLIT COUNTER NUT MS-PG / MS-M

Multifunctional, split counter nut consists of brass, nickel-plated

Separable counter nut SPLIT- MS-PG / MS-M

Usage

Split screw nut with a PG- or metrical thread. For uses in areas involving special requirements and functional reliability as well as high strength of shape.

Uses

- Machine and apparatus construction
- Medical and technical appliances
- Nuclear installation
- Planned construction
- Measuring, control process technology
- Industrial facilities

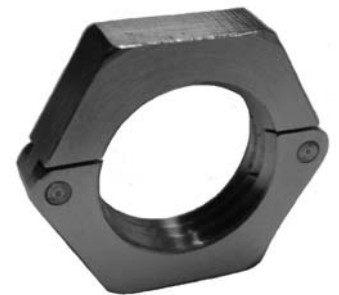
Advantage

Usable and replaceable while in working state ! Hence, a decrease in cost and time also no clearing of components is needed. The screw nut is a huge help for equipment without respectively defect thread. A big advantage is that the assembly can be completed one handedly. No clamp work needed.

Technical Data

Thread form	PG-thread or metrical thread
Materials	brass, nickel-plated, other materials upon request
Type of connection	PG 11-PG 48 ; M16-M50, special sizes upon request
Usage Temperature	-25°C through +80°C (for short periods of time up to 100°C)

contech3



contech3 GmbH

Business Manager:
Dipl.-Ing.(Fh) Jürgen Morawietz
Roland Schließleder
Rudolf Wolf

Sitz der Gesellschaft:
Metten, Registergericht Deggendorf HRB 3257
Sparkasse Deggendorf, bank account 420047557
bank code 74150000 USt.-ID-Nr. DE263638143

Head office

Bonhoefferstrasse 4, Postfach 1140, 94523 Metten
T +49 (0)991/995 90 30 / Fax +49 (0)991-995 90 31
Cell phone +49 (0)1520/384 99 88
info@contech3.eu / www.contech3.eu